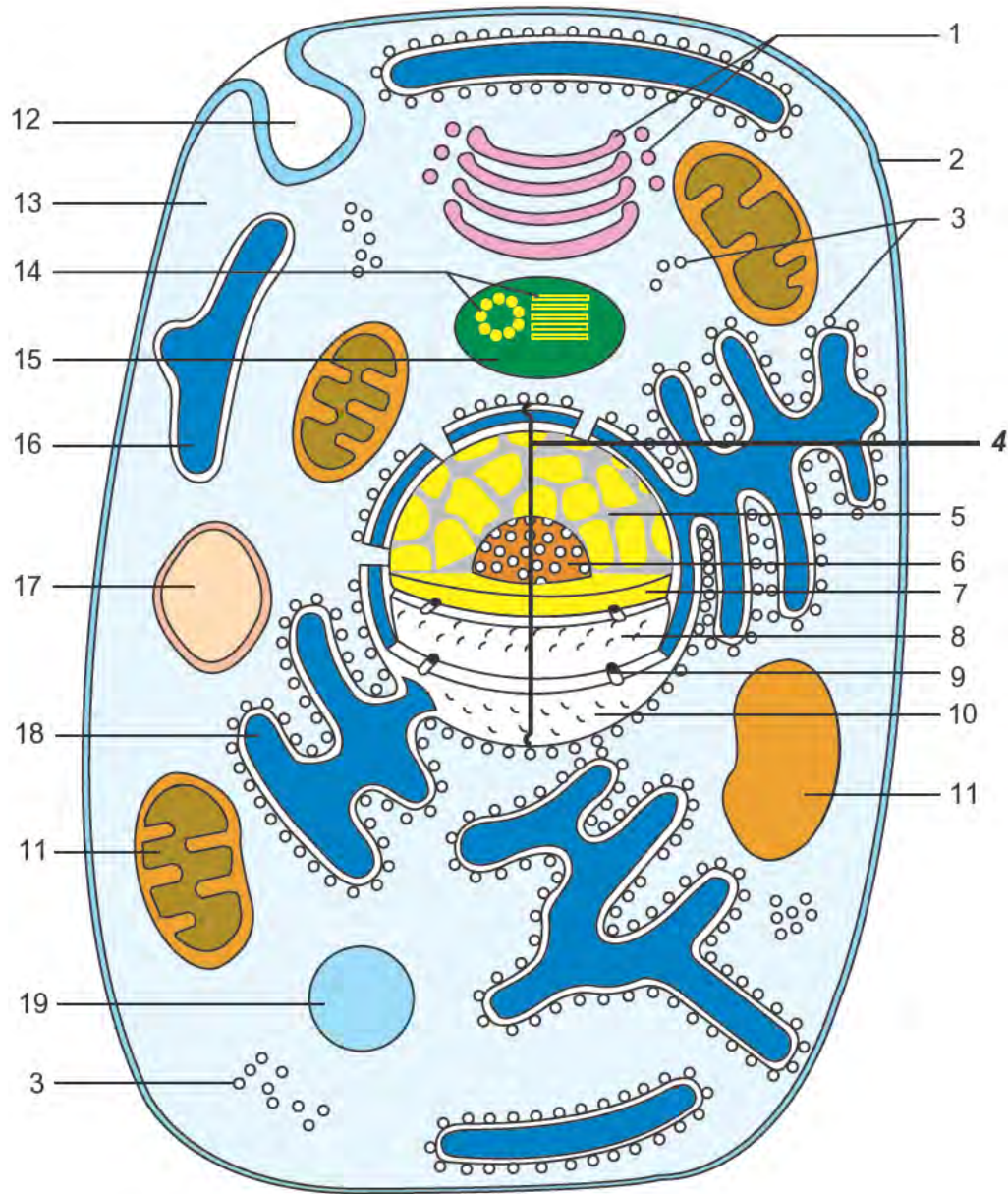




Model is fragile. Handle with care.



- | | | |
|-----------------------------|--|----------------------------------|
| 1. Golgi Body with Vesicles | 8. Inner Membrane of Nuclear Envelope | 14. Centrioles |
| 2. Cell Membrane | 9. Nuclear Pores | 15. Centrosomal Area |
| 3. Ribosomes | 10. Outer Membrane of Nuclear Envelope | 16. Smooth Endoplasmic Reticulum |
| 4. Nucleus | 11. Mitochondrion | 17. Lysosome or Peroxisome |
| 5. Chromatin | 12. Pinocytotic Vesicle Formation | 18. Rough Endoplasmic Reticulum |
| 6. Nucleolus | 13. Cytoplasm with Organelles | 19. Vacuole |
| 7. Nucleoplasm | | |