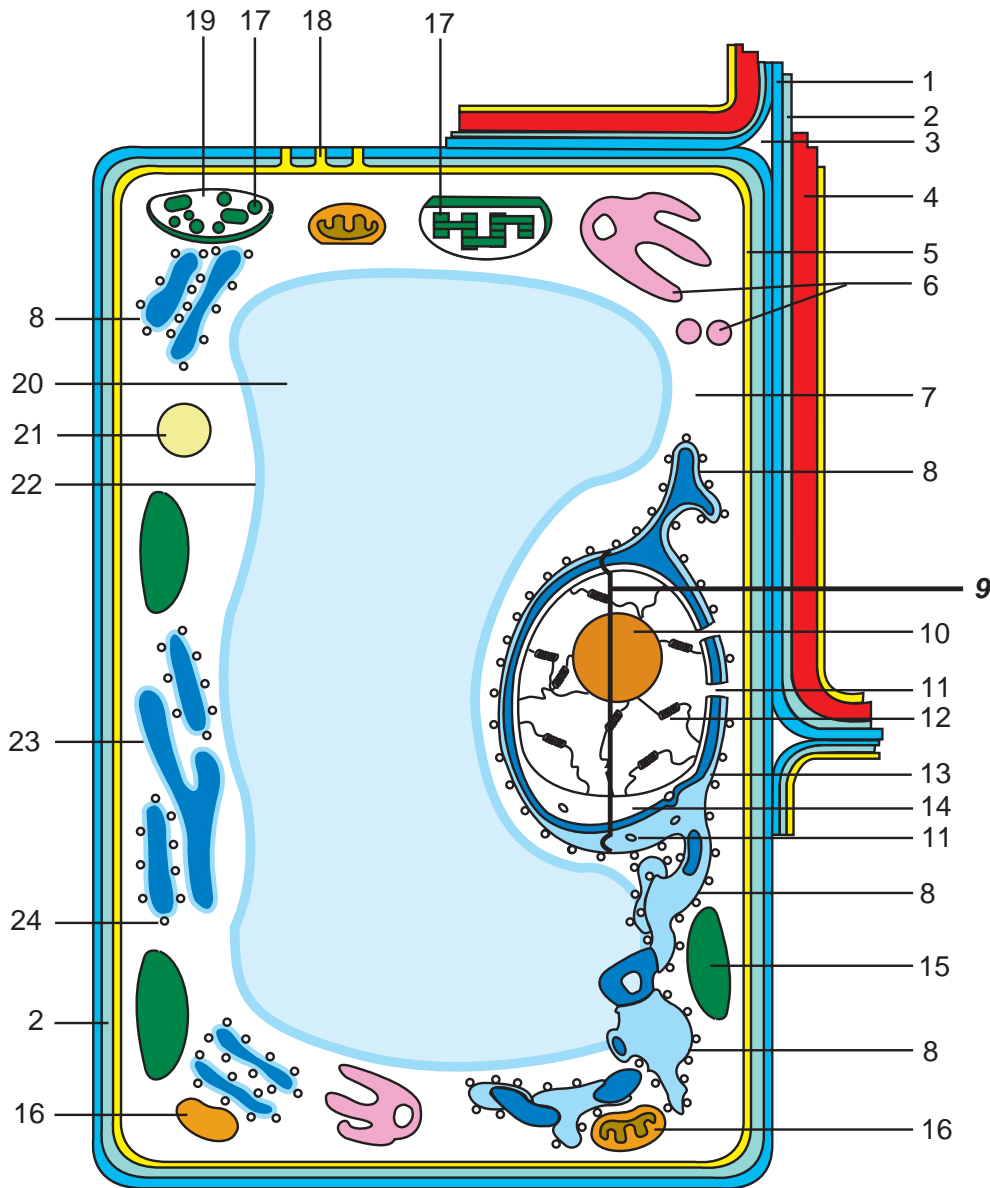




Model is fragile. Handle with care.



- | | | |
|--|--|----------------------------------|
| 1. Middle Lamella or Intercellular Layer | 8. Rough Endoplasmic Reticulum | 16. Mitochondrion |
| 2. Primary Cell Wall | 9. Nucleus | 17. Granum |
| 3. Intercellular Space | 10. Nucleolus | 18. Plasmodesmata |
| 4. Secondary Cell Wall | 11. Nuclear Pores | 19. Chloroplast Stroma |
| 5. Plasma Membrane | 12. Chromosome | 20. Vacuole |
| 6. Golgi Body with Vesicles | 13. Outer Membrane of Nuclear Envelope | 21. Lysosome or Peroxisome |
| 7. Cytoplasm with Organelles | 14. Inner Membrane of Nuclear Envelope | 22. Vacuolar Membrane |
| | 15. Chloroplast | 23. Smooth Endoplasmic Reticulum |
| | | 24. Ribosomes |