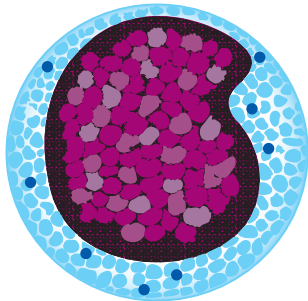
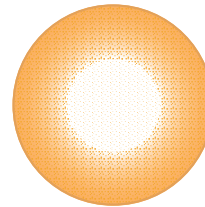




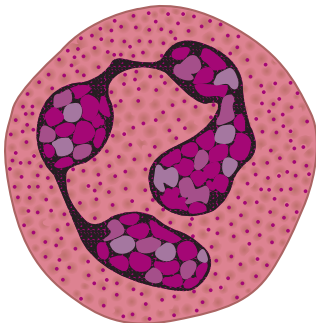
Model is fragile. Handle with care.



Lymphocyte



Erythrocyte



Neutrophil

### Red Blood Cell

Erythrocyte - transport O<sub>2</sub> and CO<sub>2</sub> bound to hemoglobin

### White Blood Cells

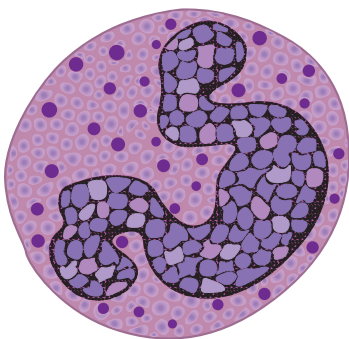
Lymphocyte -  
 B cells - make antibodies  
 T cells - kill virus-infected cells and regulate activities of other leucocytes

Neutrophil - phagocytose and destroy invading bacteria & other small bacteria

Basophil - release histamine (and in some species serotonin) in certain immune reactions

Eosinophil - destroy larger parasites and modulate allergic inflammatory responses

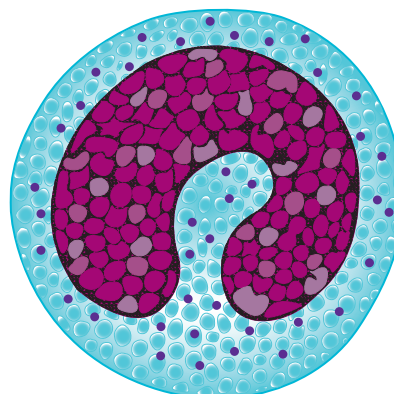
Monocyte - become tissue macrophage, which phagocytose and digest invading microorganisms and foreign bodies as well as damaged senescent cells



Basophil



Eosinophil



Monocyte