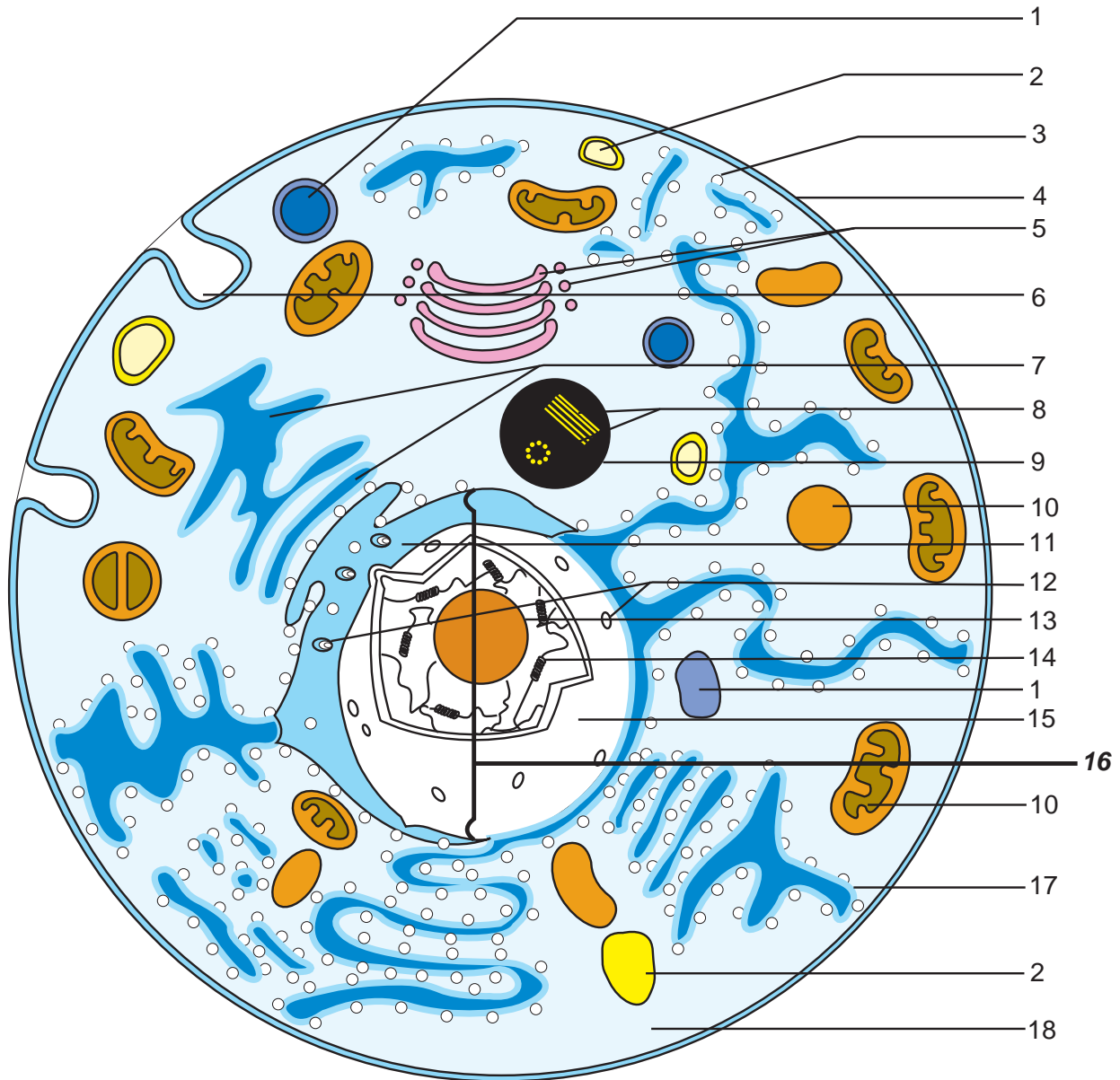




Model is fragile. Handle with care.



- | | | |
|----------------------------------|--|--|
| 1. Vacuole | 8. Centrioles | 14. Chromosome |
| 2. Lysosome or Peroxisome | 9. Centrosomal Area | 15. Inner Membrane of Nuclear Envelope |
| 3. Ribosome | 10. Mitochondrion | 16. Nucleus |
| 4. Cell Membrane | 11. Outer Membrane of Nuclear Envelope | 17. Rough Endoplasmic Reticulum |
| 5. Golgi Body with Vesicles | 12. Nuclear Pores | 18. Cytoplasm with Organelles |
| 6. Pinocytotic Vesicle Formation | 13. Nucleolus | |
| 7. Smooth Endoplasmic Reticulum | | |