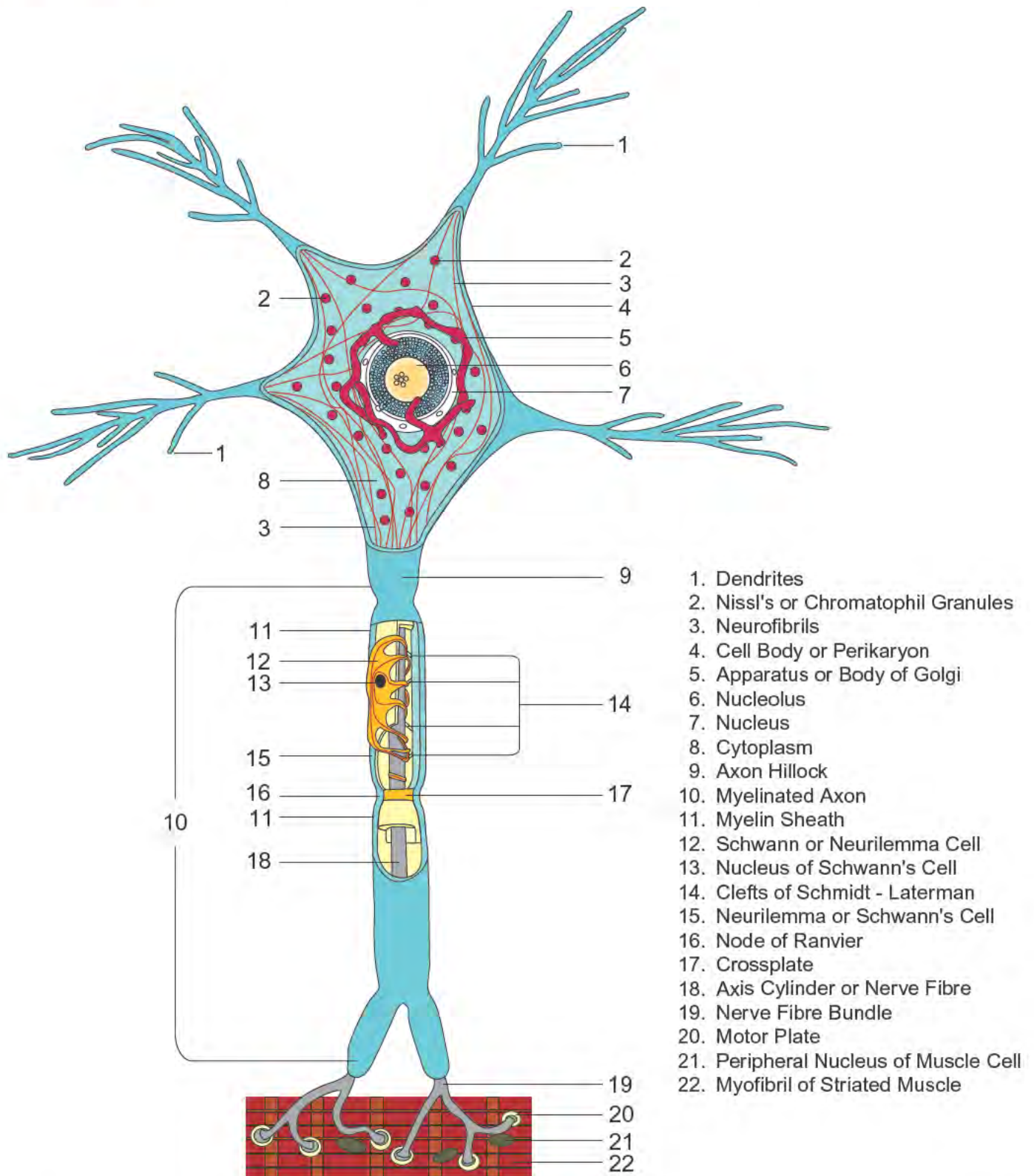




Model is fragile. Handle with care.



1. Dendrites
2. Nissl's or Chromatophil Granules
3. Neurofibrils
4. Cell Body or Perikaryon
5. Apparatus or Body of Golgi
6. Nucleolus
7. Nucleus
8. Cytoplasm
9. Axon Hillock
10. Myelinated Axon
11. Myelin Sheath
12. Schwann or Neurilemma Cell
13. Nucleus of Schwann's Cell
14. Clefts of Schmidt - Laterman
15. Neurilemma or Schwann's Cell
16. Node of Ranvier
17. Crossplate
18. Axis Cylinder or Nerve Fibre
19. Nerve Fibre Bundle
20. Motor Plate
21. Peripheral Nucleus of Muscle Cell
22. Myofibril of Striated Muscle